



SGMA Update

GSP & Alternative Periodic Evaluation Submittals

- Critically Overdrafted Basin GSPs were submitted by January 31, 2020
 - **21 basins/46 GSPs**
- High and Medium Priority GSPs were submitted by January 31, 2022
 - **63 basins/65 GSPs**
- **9 Alternative Periodic Evaluations** were submitted by January 1, 2022 (*updated plans are submitted to DWR every 5 years for review*)
- The Department completed all the reviews before the 2-year statutory deadline



Groundwater Sustainability Plan Determinations

71
Basins

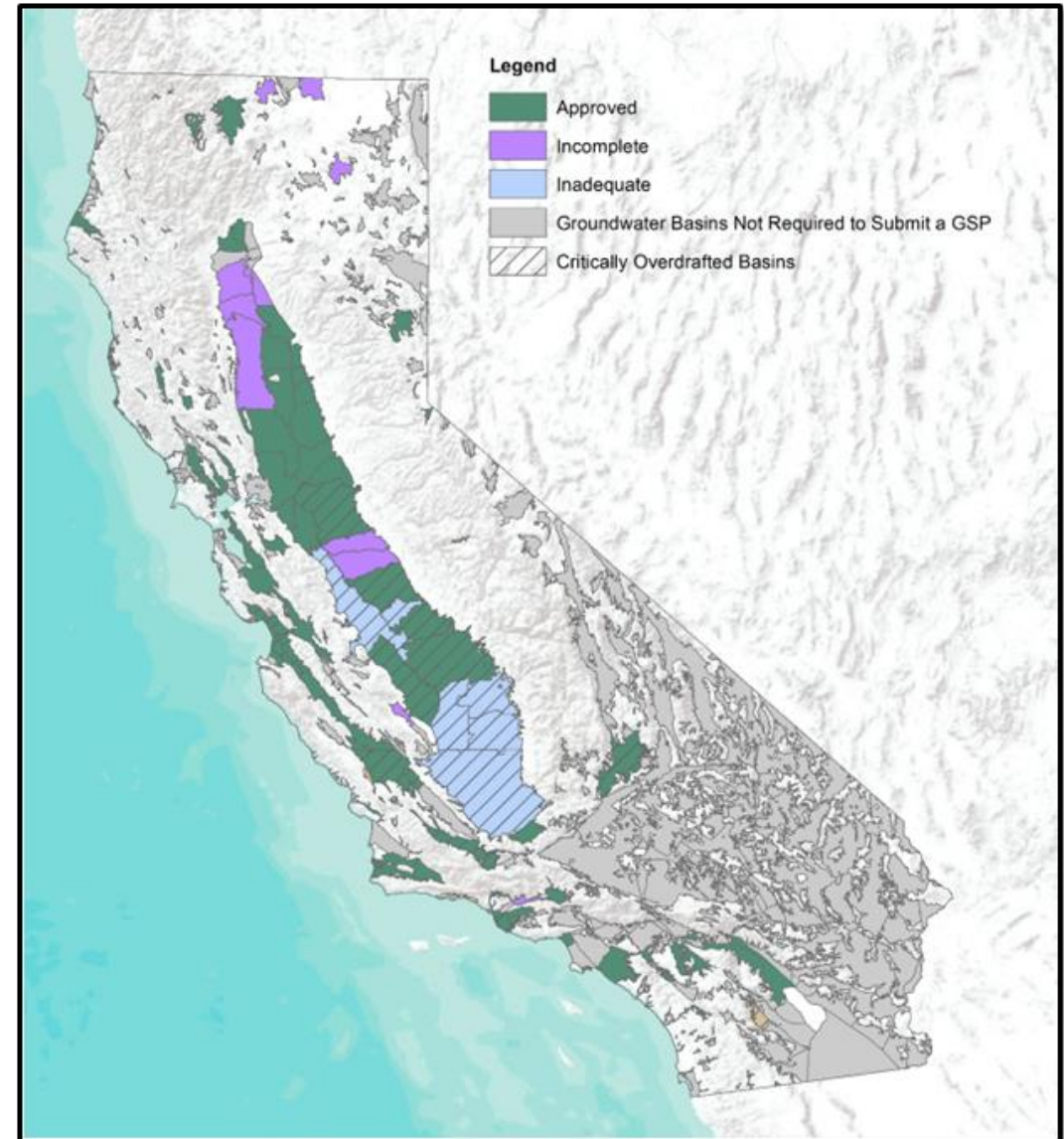
APPROVED BASINS

13
Basins

INCOMPLETE BASINS

6
Basins

INADEQUATE BASINS



Note: Map updated January 2024