

SANTA CLARA COUNTY HOMELESSNESS PREVENTION SYSTEM



The Homelessness Prevention System

OUR SYSTEM PARTNERS



Legal Support



Emergency Family Shelter Support



Domestic Violence Advocacy Consortium



ASSISTANCE AVAILABLE



Immediate cash assistance that can be used towards rent, utilities and other basic expenses



Legal support & eviction defense



Case management services



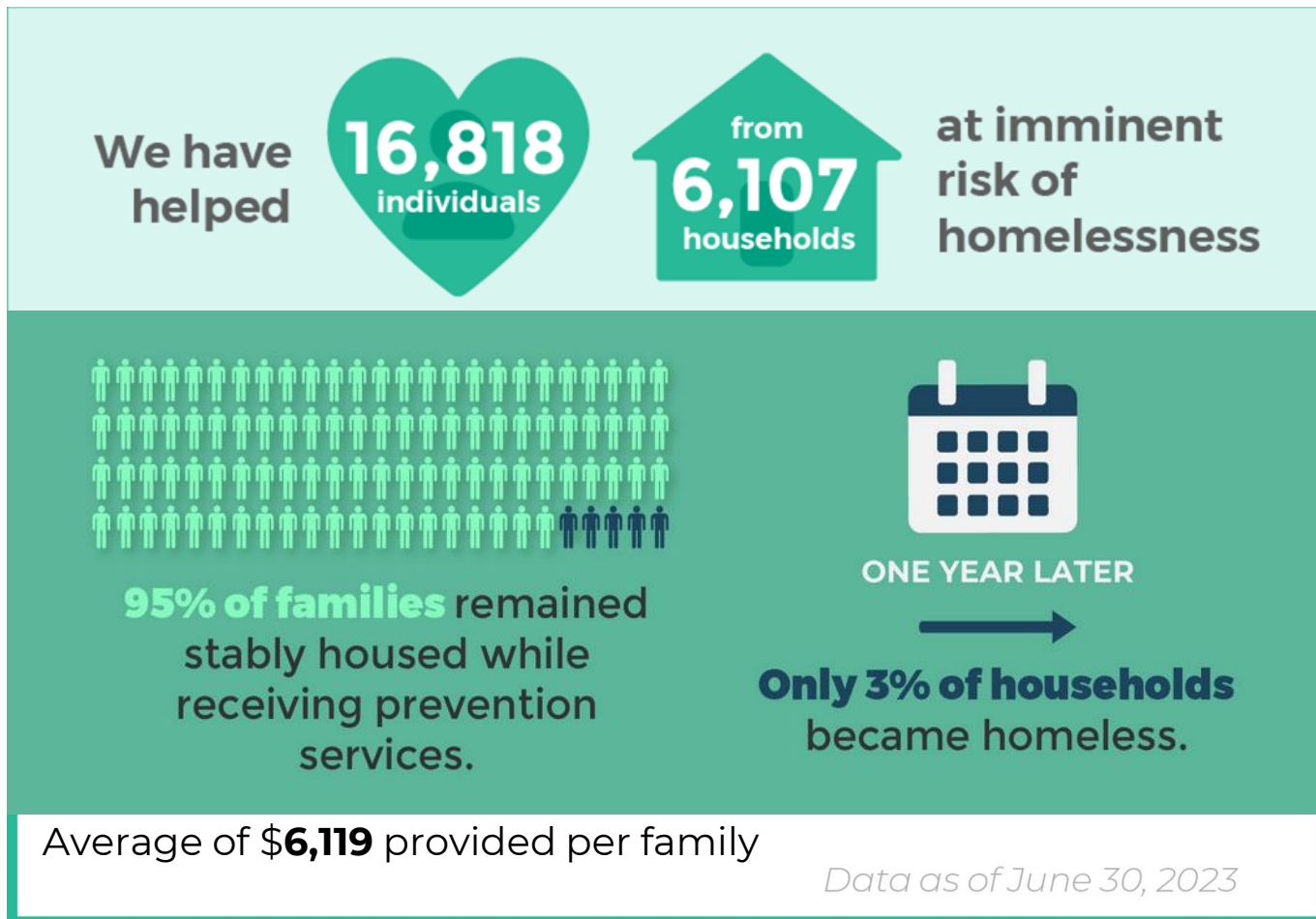
Assistance applying for benefits



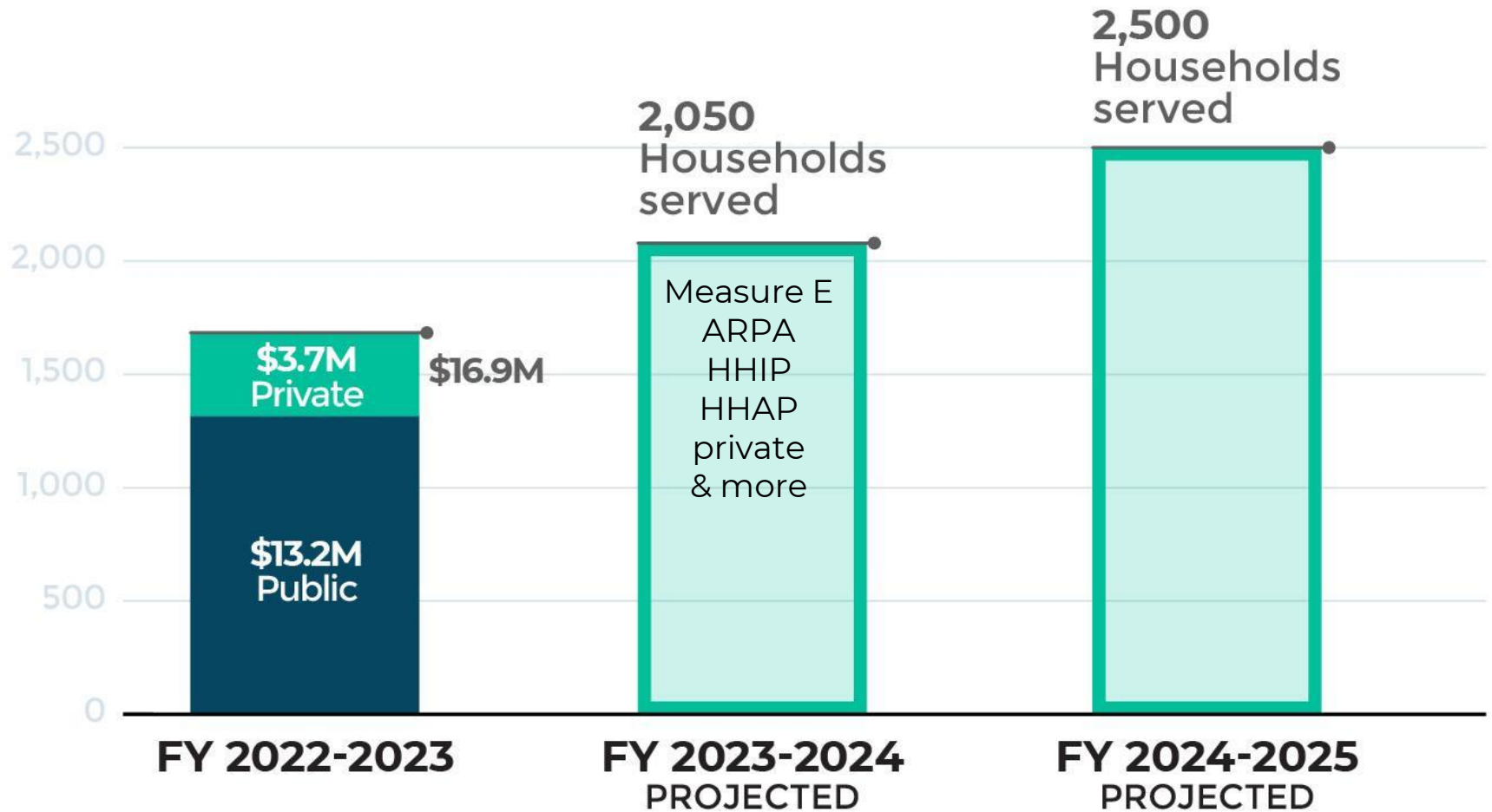
Help accessing services & resources provided by other partners

Preventing Homelessness

Since 2017, through the Santa Clara County Homelessness Prevention System:



Meeting the Community Plan Goals



Data as of Dec. 31, 2022

Current Trends



More than half of households seeking assistance have had a COVID impact.



Financial impact remains as the most common reason for needing assistance.



Most households seeking assistance report that they will not be stable moving forward.



Higher number of cases with 3 Day Notices, Pay or Quit Notices, or Unlawful Detainers



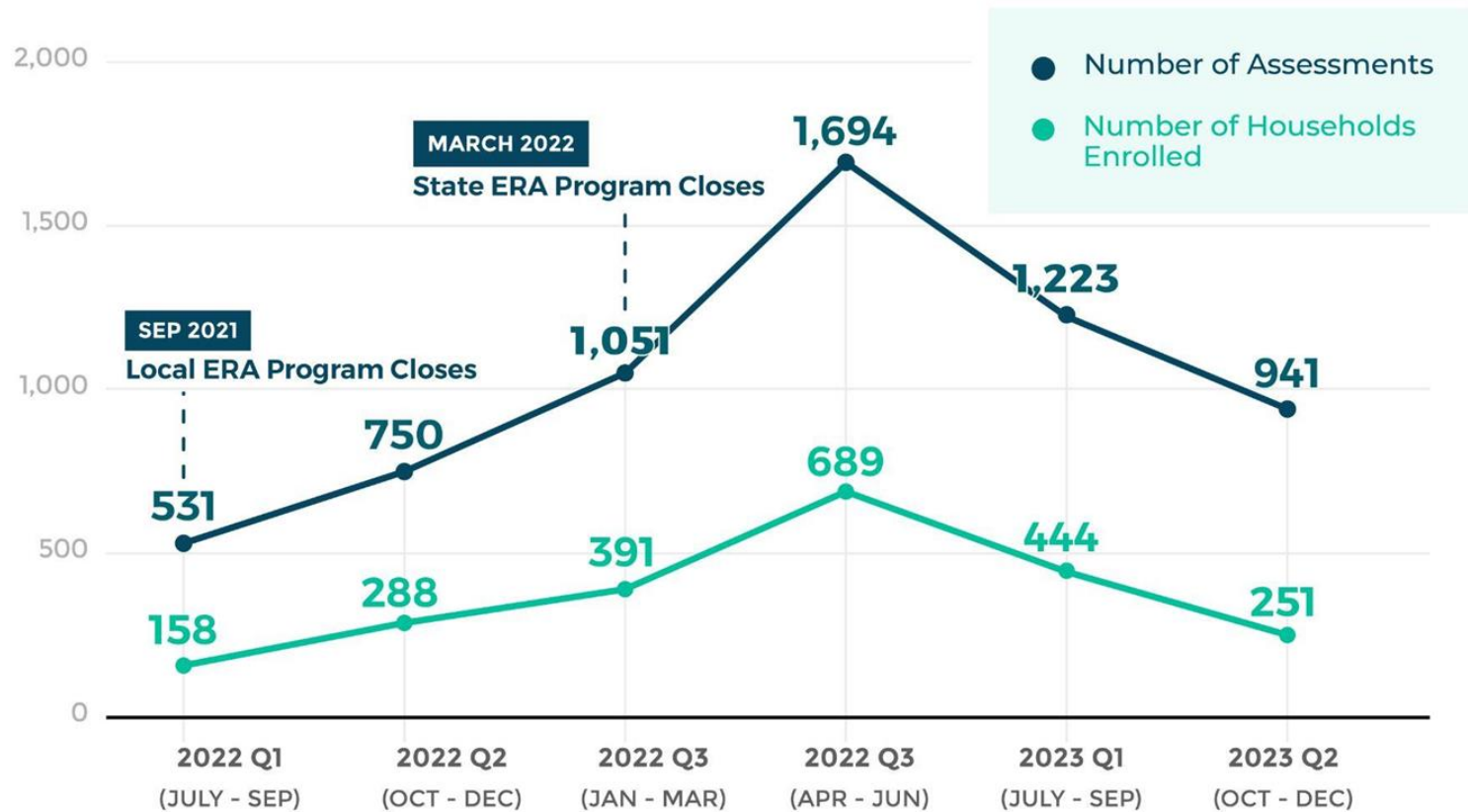
Households seeking large amounts of financial assistance for past-due rent.



Community need continues to surpass agency capacity.

Demand Outpacing Capacity

FAMILIES SEEKING ASSISTANCE BY QUARTER (FY21-23)

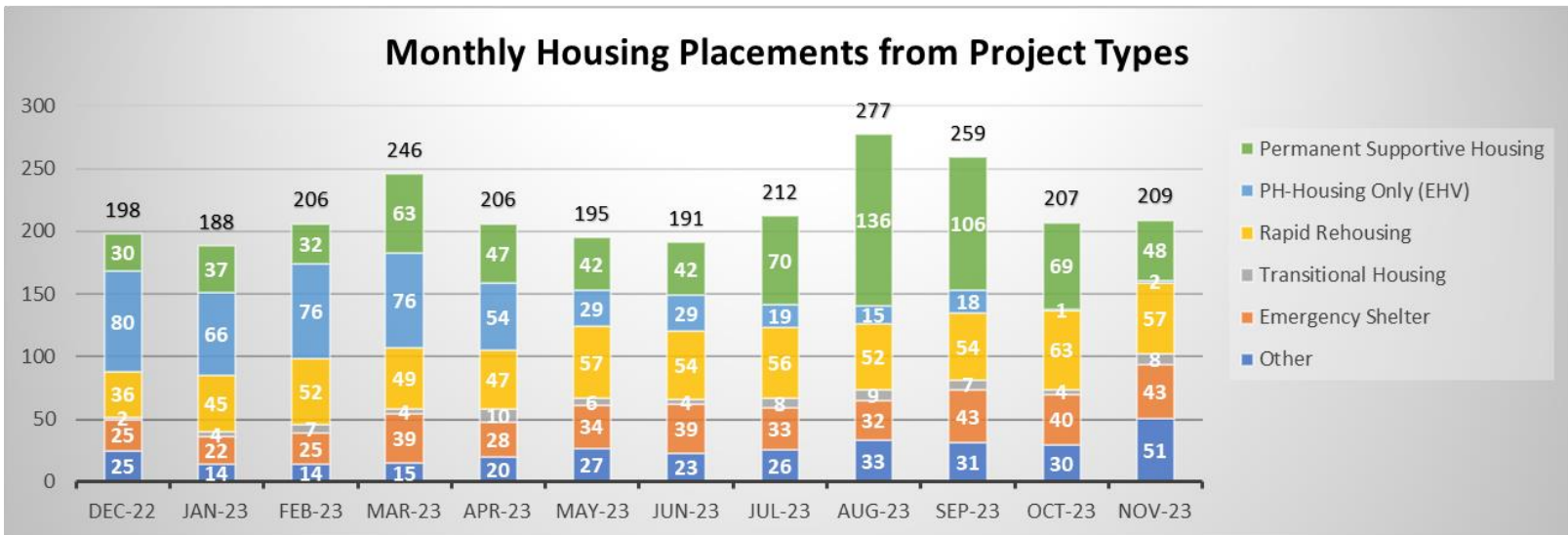
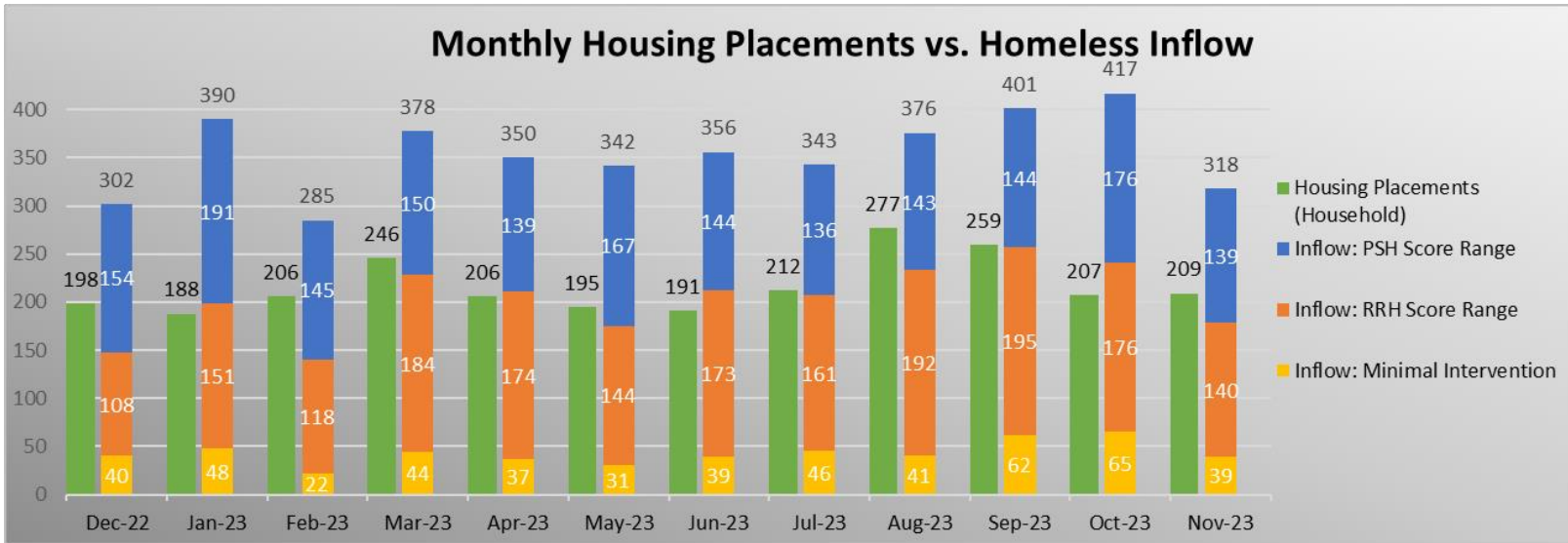


Data as of Dec. 31, 2022

The background is a solid teal color. It features several decorative elements: a cluster of white dots in the top-left corner, a larger cluster of white dots in the top-center, a cluster of white dots in the bottom-left corner, and several abstract, rounded white shapes scattered across the page.

Performance Outcomes

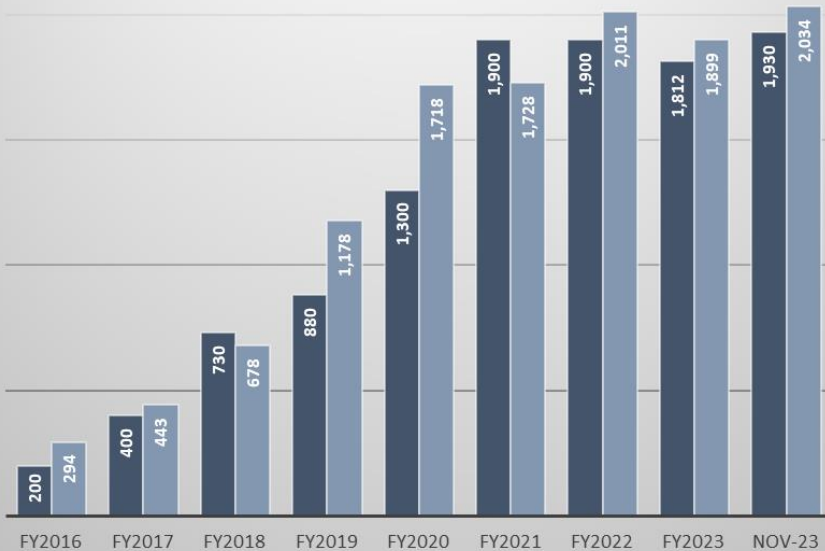
Housing Placements and Inflow by Month



Utilization and Outcomes: November 2023

HP Capacity and Households Served (For HPS and EAN HP Combined)

■ Annual Capacity ■ Households Served



HP Program Outcomes (Dec. 2022 to Nov. 2023)

■ HPS (n=1,936)

PERCENTAGE OF HOUSEHOLDS THAT REMAIN STABLY HOUSED WHILE RECEIVING PREVENTION ASSISTANCE

91%

HOUSEHOLDS THAT RECEIVED FINANCIAL AID

87%

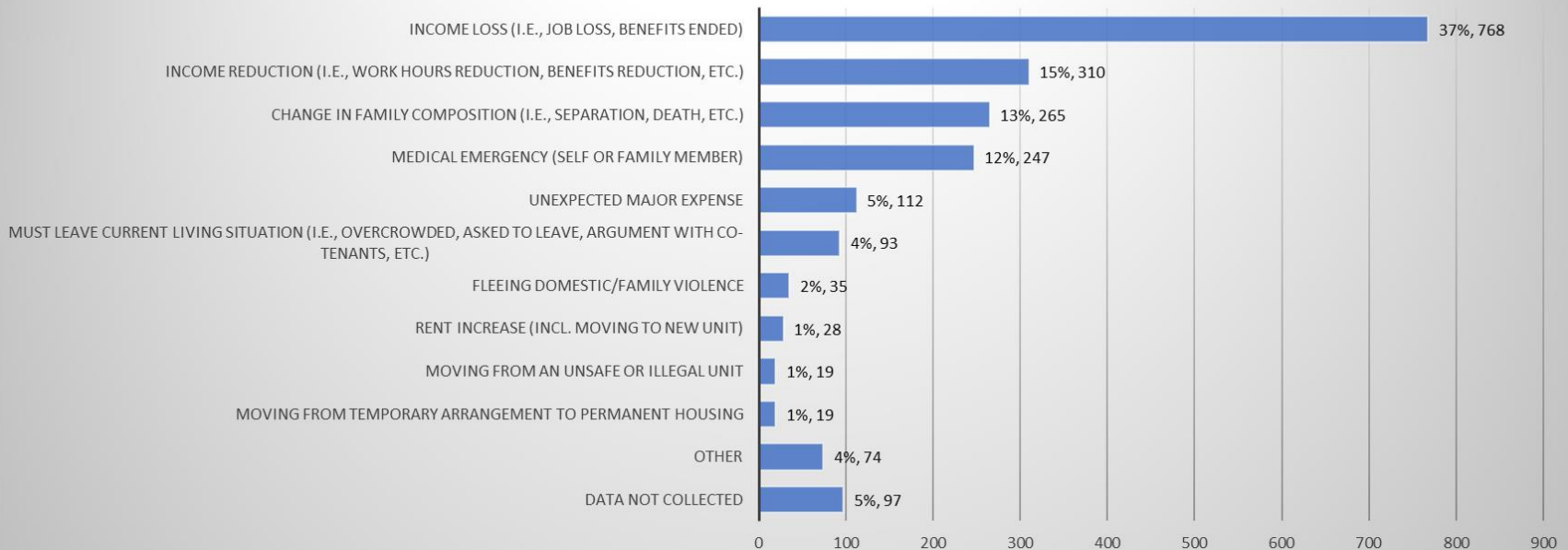
OF THOSE WHO EXITED HP, HOUSEHOLDS WHO EXITED TO PERMANENT DESTINATIONS

90%

0% 10% 20% 30% 40% 50% 60% 70% 80% 90% 100%

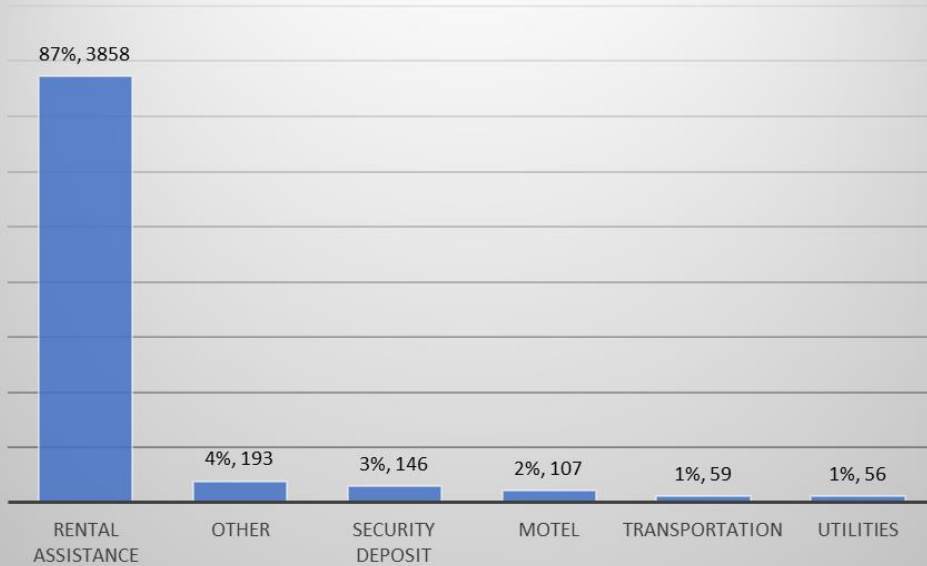
Reasons for Assistance

**HPS: Reasons for Assistance
(2,067 Household Enrollments)**

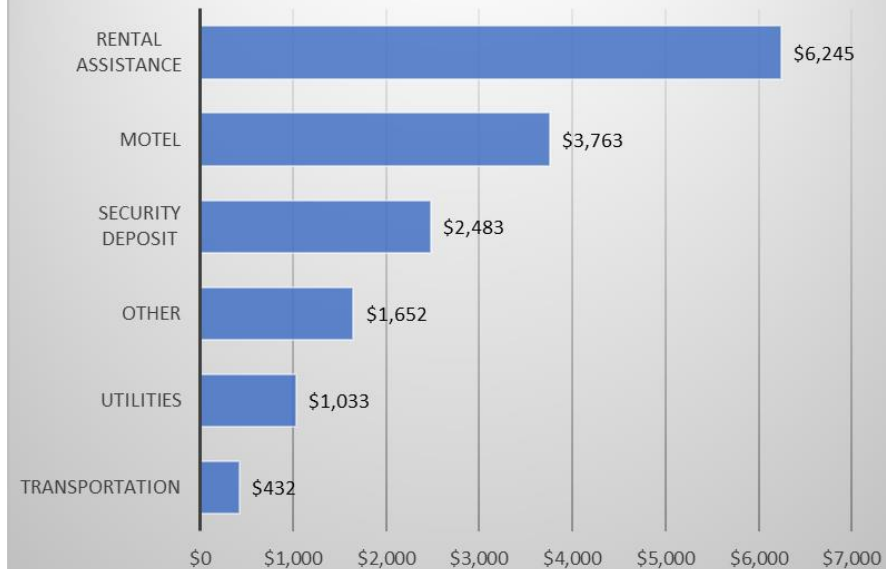


Financial Assistance Types and Amounts Dec. 2022 to Nov. 2023

**HPS: Number of Service Transactions by Type (4,419
Total Transactions for 1,444 Households)**



**HPS: Average Amount of Assistance per Household
(Total Assistance \$9,293,557)**



Demographics of Unduplicated Households Served Dec. 2022 to Nov. 2023

