

Regional Homelessness Prevention

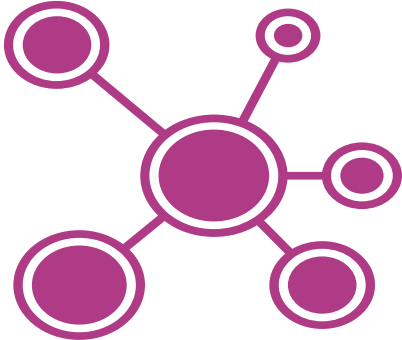
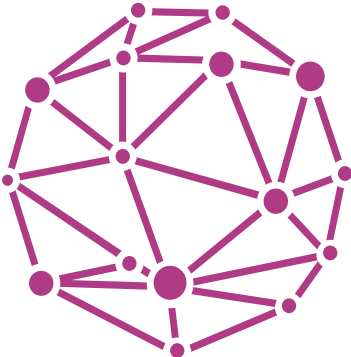
2024

Mary Kate Johnson, Director of Regional Homelessness Prevention

mkjohnson@allhomeca.org



All Home | What We Do



CONVENE

CO-CREATE

CATALYZE

All Home advances regional solutions that disrupt cycles of poverty and homelessness, redress racial disparities, and create more economic mobility for people with extremely low incomes.

1-2-4 Framework for Homelessness Solutions

To achieve
75% reduction
in unsheltered
homelessness

Simultaneously
invest in three
interventions



+1x Interim Housing

Fund interim housing needed for people to stabilize and connect to services on the path to permanent homes on the path to permanent exits.



+2x Permanent Housing Solutions

Fund at least two permanent housing solutions for every interim housing unit added. These can be a housing subsidy or affordable housing that allows people to move from interim to permanent housing.



+4x Homelessness Prevention

Simultaneously, each unit of interim housing should be matched with holistic prevention services for four households.

This Is a Math Problem:

“

The overall number of people experiencing homelessness will only go down if more people exit homelessness than enter it....

Preventing homelessness before it starts is critical to ending it.

”

United States Interagency Council on Homelessness, *All In: The Federal Strategic Plan to Prevent and End Homelessness* (December 2022)

Regional Homelessness Prevention Strategy

Problem

Across the region, three people are becoming homeless for every one that is housed by homeless response systems

Strategy

Target prevention resources to the people at highest risk of actually experiencing homelessness (“targeted prevention”)

Implementation

A regional network of targeted prevention programs operating in each county across the Bay Area

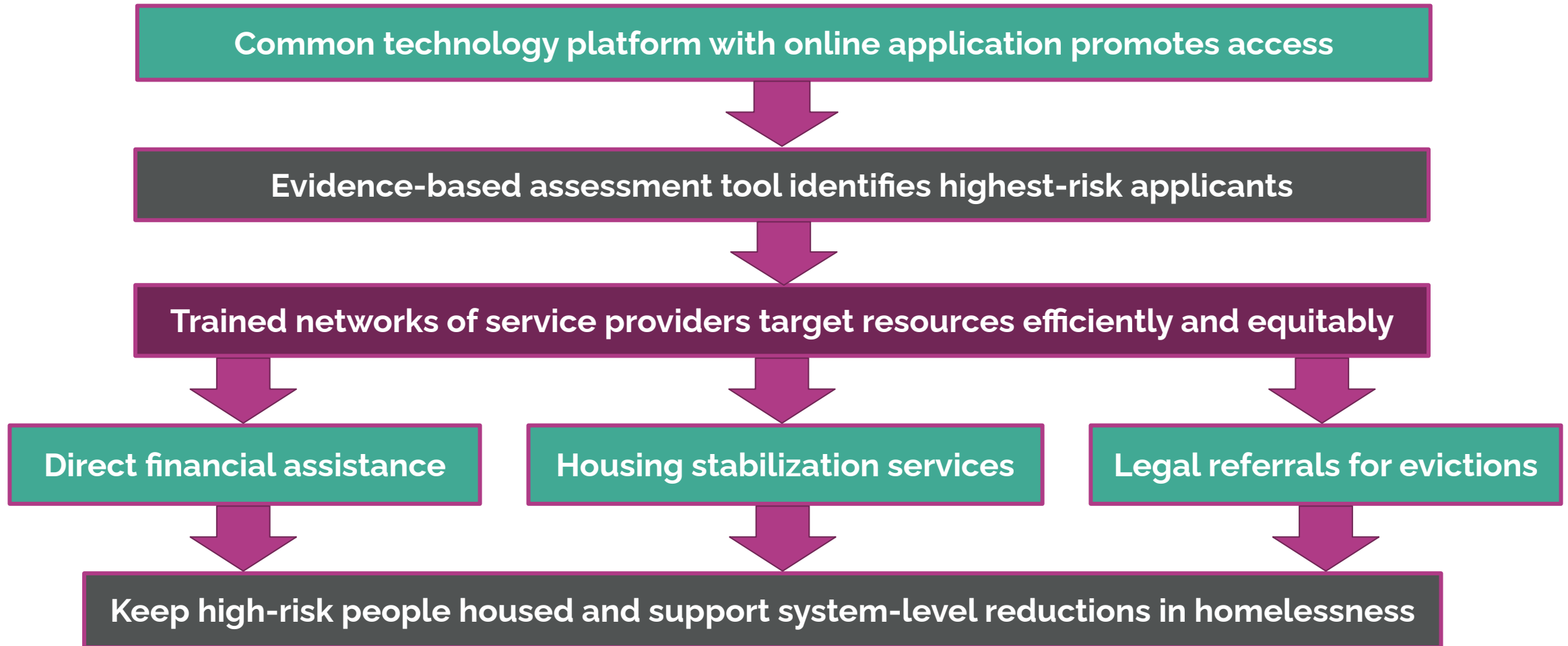
82% of encampment residents surveyed in a statewide study believed that receiving a one-time payment of \$5,000-\$10,000 would have prevented their homelessness.

Prevention Is a Continuum

Homelessness Diversion	Targeted Prevention	Eviction Prevention	Housing Stabilization
<p>Services:</p> <ul style="list-style-type: none"> • Housing Problem-Solving • Shelter and Crisis Services <p>Target populations: Doubled up or lost housing, 0-30% AMI, presenting for homeless services, previous experience of homelessness, highly impacted communities and neighborhoods</p> <p>Goals:</p> <ul style="list-style-type: none"> • Crisis response • Rapid exit 	<p>Services:</p> <ul style="list-style-type: none"> • Direct Financial Assistance • Housing Stabilization Services <p>Target populations: Non-leaseholders, 0-30% AMI, severe rent burden, previous experience of homelessness, highly impacted communities and neighborhoods</p> <p>Goals:</p> <ul style="list-style-type: none"> • Prevent loss of housing • Housing stability 	<p>Services:</p> <ul style="list-style-type: none"> • Legal Representation • Tenant Support Services <p>Target populations: Leaseholders and non-leaseholders, 0-50% AMI, severe rent burden, active eviction, habitability or harassment issues, highly impacted communities and neighborhoods</p> <p>Goals:</p> <ul style="list-style-type: none"> • Anti-displacement • Unit habitability 	<p>Services:</p> <ul style="list-style-type: none"> • Rental Subsidy Programs • Guaranteed Basic Income <p>Target populations: Leaseholders and non-leaseholders, 0-50% AMI, severe rent burden, highly impacted communities and neighborhoods</p> <p>Goals:</p> <ul style="list-style-type: none"> • Housing stability • Economic mobility
Experiencing homelessness	Imminent risk of homelessness	Non-imminent risk of homelessness	Future risk of homelessness



Regional Homelessness Prevention Program Model



Our Online Application Creates Access



Keep People Housed Bay Area Regional Homelessness Prevention

Welcome to the Keep People Housed Homelessness Prevention Platform! Click the images below to access the applications for region-specific Keep People Housed assistance. KPH may be able to help eligible applicants who have past-due rent, or who need help paying the costs of moving into a new unit they have already identified and plan to lease. Applicants are now eligible for one-time assistance.

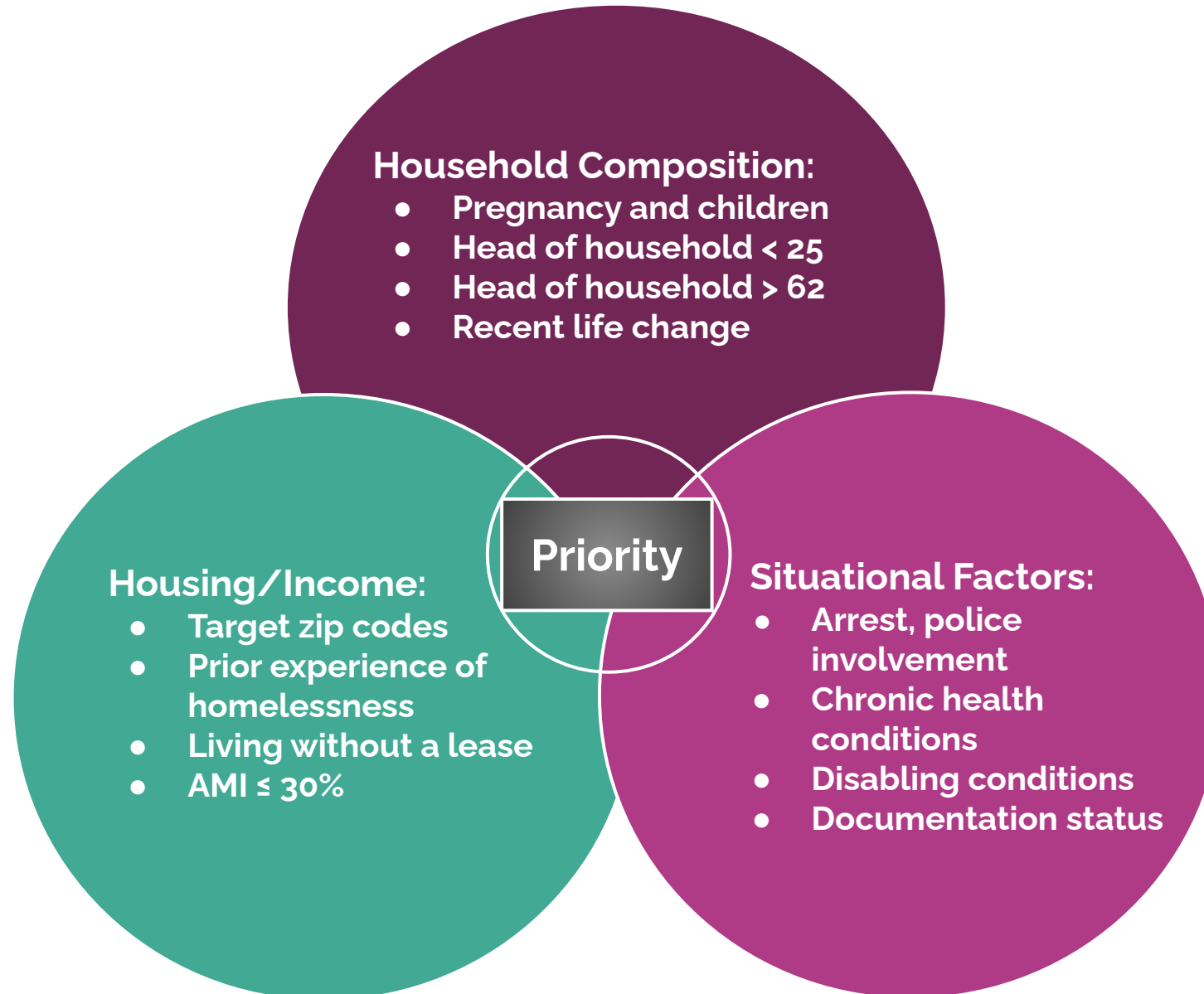
Click below if you are applying in Oakland, CA



Click below if you are applying in Contra Costa County



Our Assessment Tool Identifies the Most At-Risk

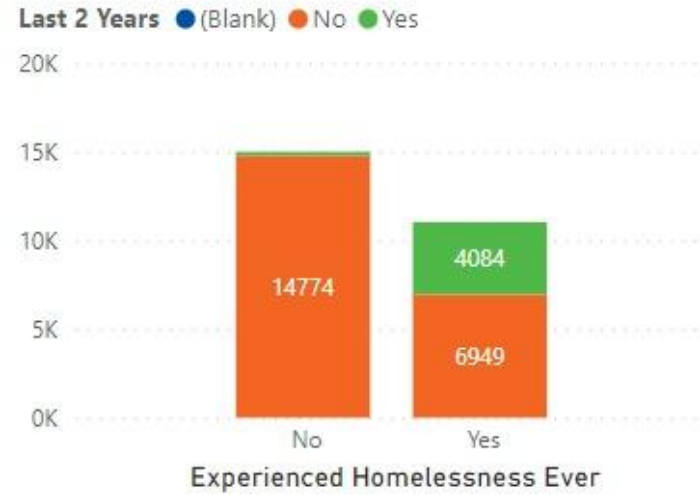


Our Technology Is Building Regional Infrastructure

Application Counts



Experienced Homelessness Count



\$58,380,469.59

Amount Approved (All Apps)

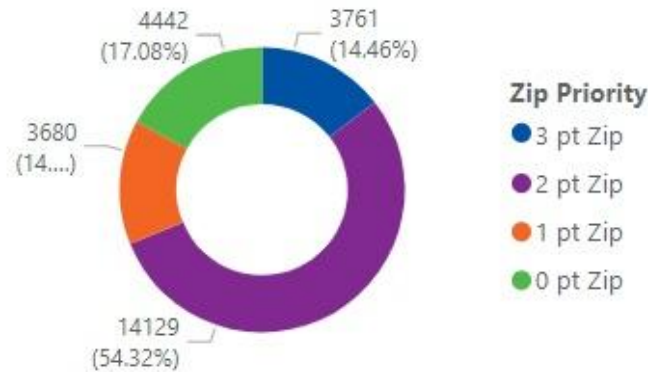
\$56,486,657.12

Amount Approved for Paid Apps

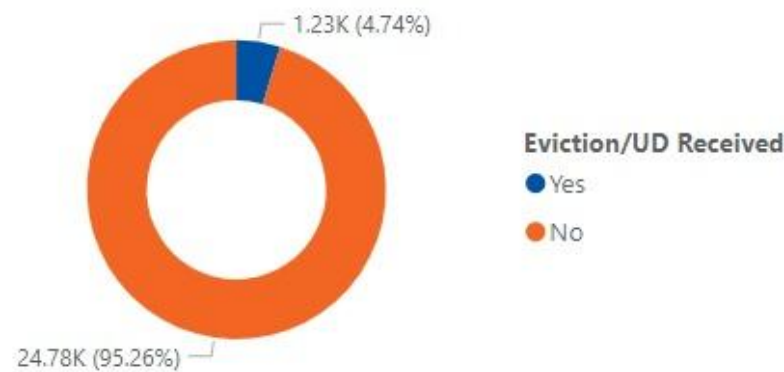
\$6,572.80

Avg Amount Approved for Paid Apps

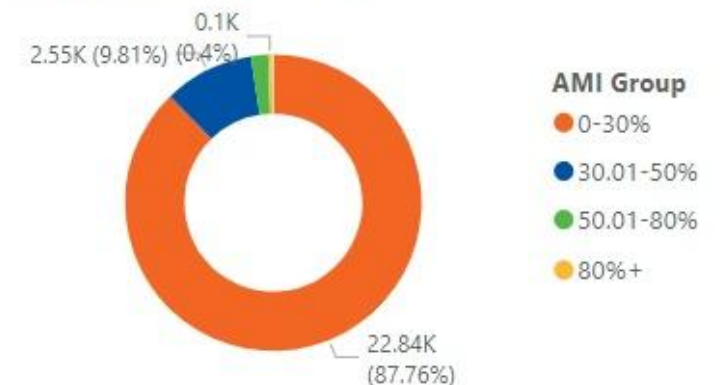
Applications by Zip Code Priority



Applications Received Eviction Notice/UD



Applications by AMI Group



Targeting is Efficient and Equitable:

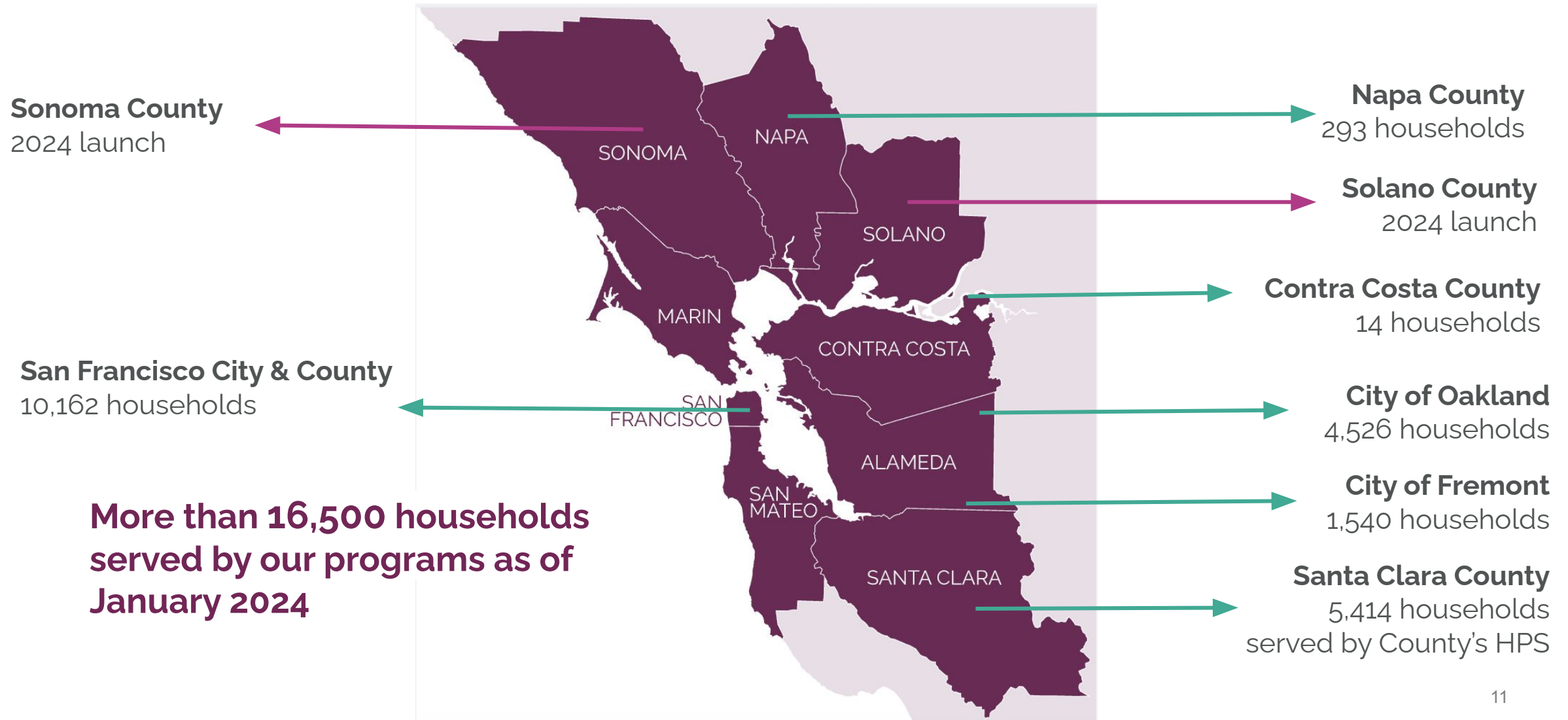
“

A program that appears to be highly *effective* may actually be highly *inefficient* if it targeted people who wouldn't become homeless anyway.

”

Marybeth Shinn, Cornelius Vanderbilt Chair and professor of human, organizational, and community development at Vanderbilt University
Rebecca Cohen, Abt Associates

Toward a Regional Network of Programs



More than 16,500 households served by our programs as of January 2024

Early Results from COVID-19 Pilots

SF's ERA Program 2021-2022

- 15,000+ applications received
- 5,500+ checks issued
- \$38 million total disbursed
- \$6,900 average assistance
- 98% below 50% AMI
- 36% had experienced homelessness
- 17% had received eviction notice
- 77% identify as BIPOC

Keep Oakland Housed 2020-2022

- 19,000+ applications received
- 5,700+ checks issued
- \$44 million total disbursed
- \$7,600 average assistance
- 97% below 50% AMI
- 38% had experienced homelessness
- 15% had received eviction notice
- 78% identify as BIPOC

Outcomes from Santa Clara County's HPS

Housing Retention

Over 90% of households receiving prevention services remain housed after two years. Notre Dame researchers found that households served are 73% less likely to become homeless than those not receiving services.

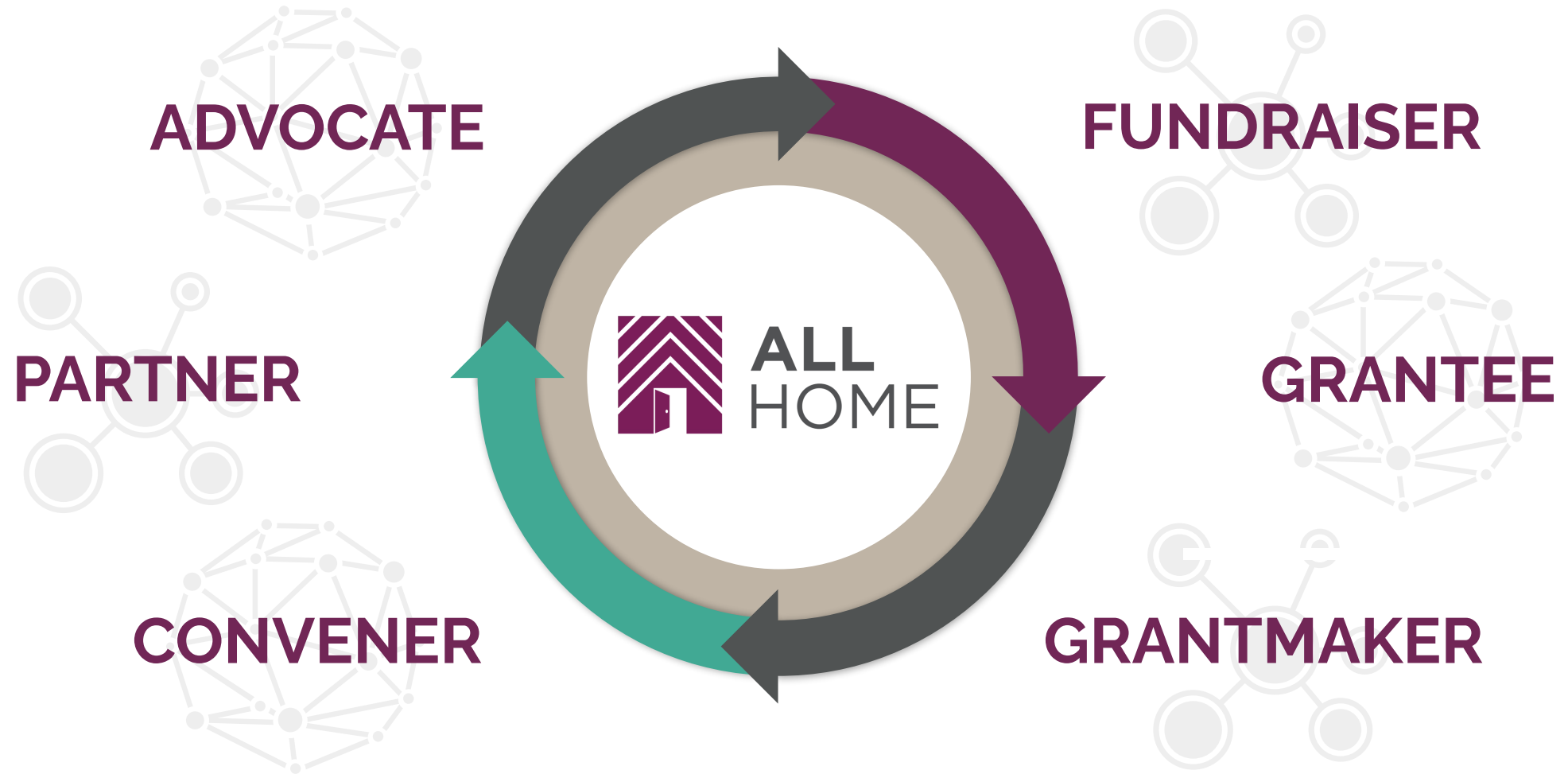
Racial Equity

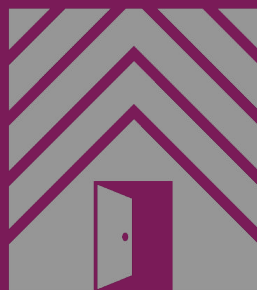
Santa Clara County's HPS has served 12,000+ people from 4455+ households since it launched in 2017. 87% of households served are extremely low income and 87% are people of color.

Reduced Homelessness

Six years ago, 3.2 people were becoming homeless for every one housed. Today, that's down to 1.7 as a result of intentional investments in permanent housing and targeted homelessness prevention.

All Home's Roles





ALL
HOME

www.allhomeca.org