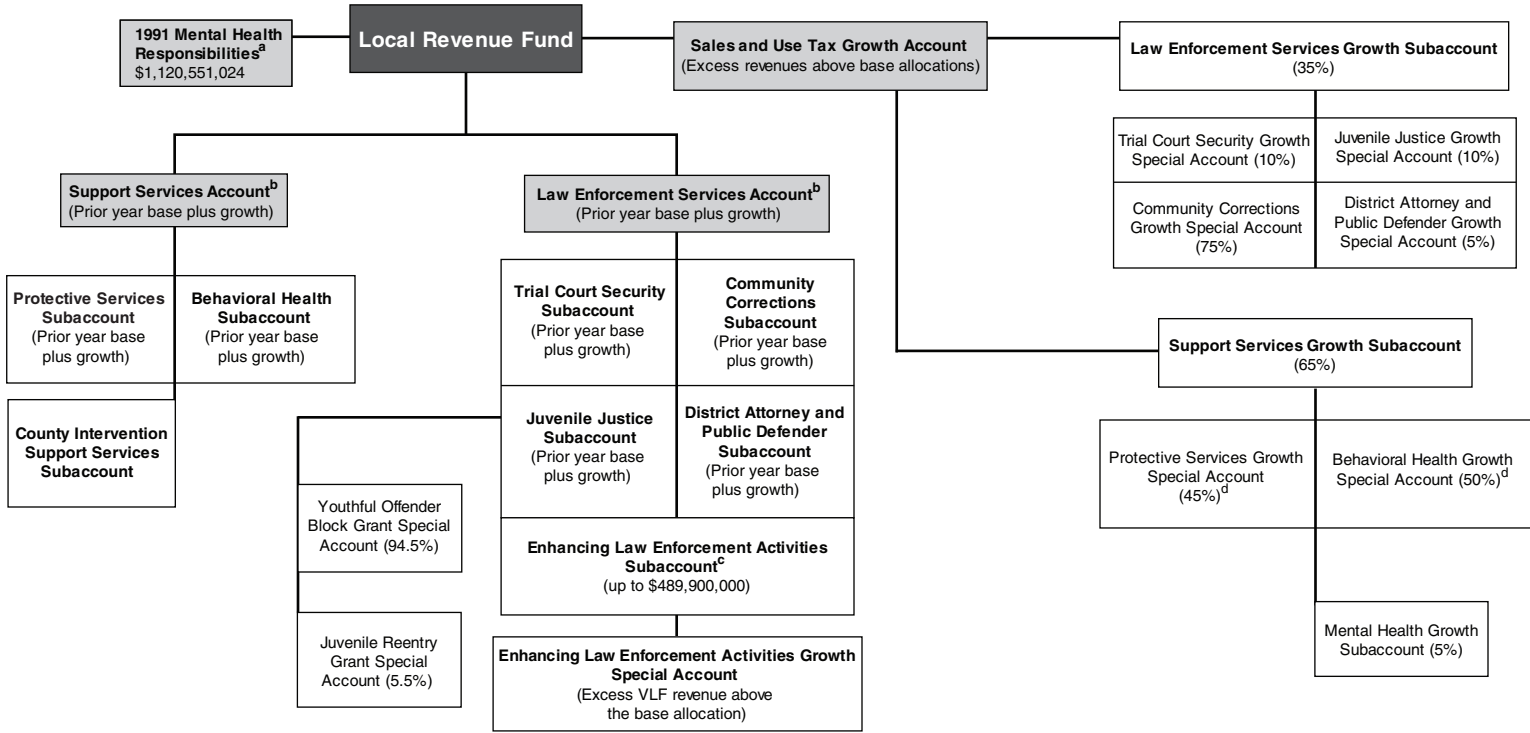


**2011 Realignment Fund Structure
As Proposed in May Revision for Fiscal Year 2015-16 (And Thereafter)**



^a This amount is transferred first from the sales tax revenues in the Local Revenue Fund.

^b Base funding allocations available to the Support Services Account and Law Enforcement Services Account are net of the 1991 Mental Health transfer and any necessary vehicle license fee (VLF) backfill.

^c Unless Child Welfare Services (CWS) \$200 million growth augmentation has not yet been achieved; if not, then growth allocations are 40 percent CWS, 21.8 percent Protective Services (general), and 33.2 percent Behavioral Health.

^d According to the Department of Finance, the proposed fiscal superstructure legislation will be updated to reflect the percentage allocations displayed here.