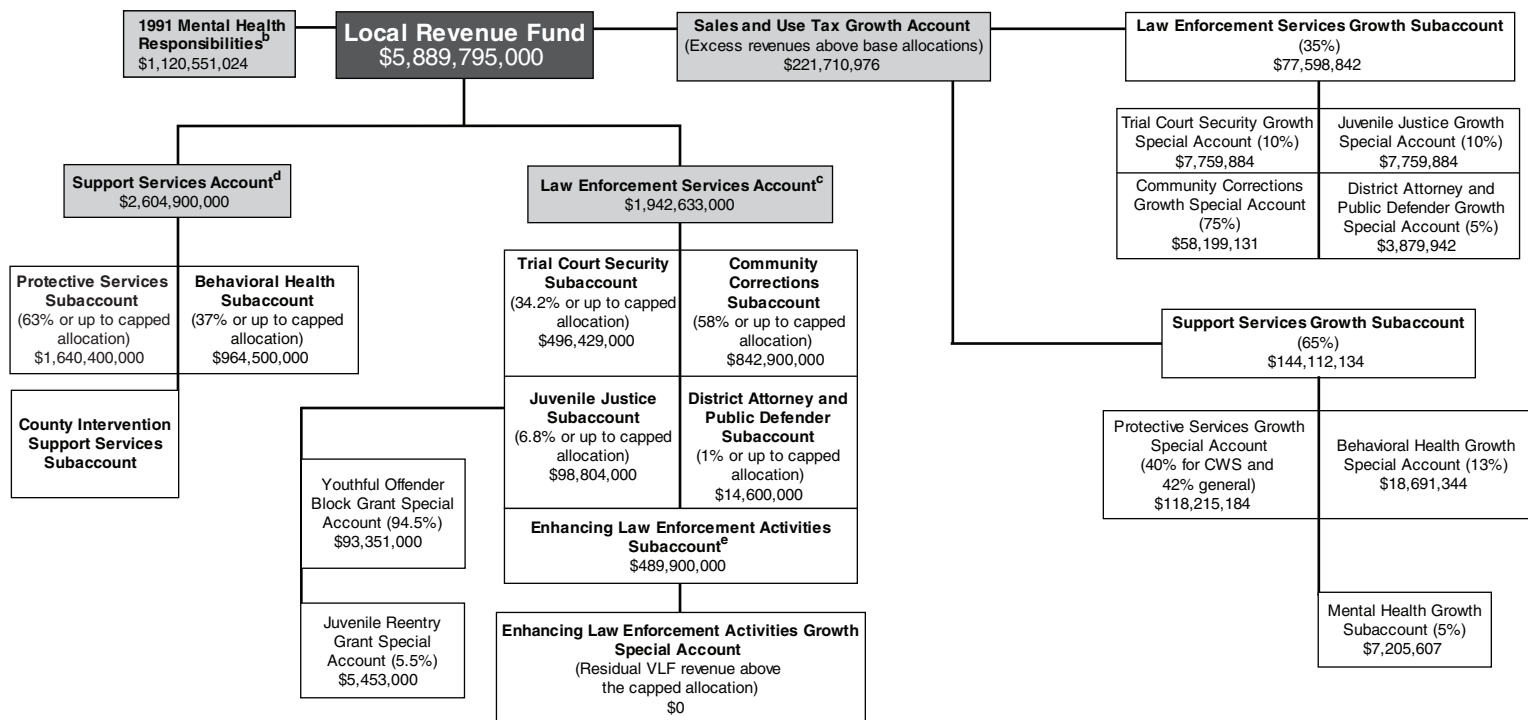


**2011 Realignment Fund Structure
As Proposed in May Revision for Fiscal Year 2012-13^a**



^a Estimated dollar amounts in each account based on the administration's revenue projections, and draft allocation estimates provided by the Department of Finance (DOF).

^b This amount is transferred first from the sales tax revenues in the Local Revenue Fund (LRF).

^c Includes 35.8 percent of LRF sales tax revenues (after 1991 Mental Health transfer and vehicle license fee [VLF] backfill) and VLF revenues. If the available revenues exceed the capped allocation, excess revenues are transferred to the growth accounts.

^d Includes 64.2 percent of LRF (after 1991 Mental Health transfer and VLF backfill). If the available revenues exceed the capped allocation, excess revenues are transferred to the growth accounts.

^e Includes a LRF sales tax backfill in the event that VLF revenues are insufficient to fully fund the allocation. The 2012-13 May Revision assumes an estimated \$35 million VLF backfill in 2012-13.

^f According to the DOF, the proposed fiscal superstructure legislation will be updated to reflect the percentage allocations displayed here.

CWS = Child Welfare Services.